

theWI

INSPIRING WOMEN

HINCKLEY CANALSIDE WI

APRIL 2024

<https://hinckleycanalsidewi.co.uk/>

President's Message



Hello Ladies

April is the month that I start to feel Spring is here, and of course the garden needs my attention. I have been unable to give it the usual complete attention but I'm starting to get my seed potatoes and tomato seeds etc. All I need now is no rain to begin.

Our future events programme looks very interesting and thanks to Sue for booking the speakers and Mandy for organising our trips and visits and putting the

programme diary together.

Recently I went to our ACM at Great Glen, it wasn't as well attended as those before covid, never the less it was very interesting. It struck me that it would be good for more of Canalside members to go next year, maybe you could give me your thoughts on that.

John Parnell "hoop guy" is our next speaker I am told he is very different. I have never been able to hula hoop, maybe I had better learn quickly so I can participate without too much laughter.

It will be great to see you all at our next meeting. **Ann**

Just a reminder - the email address to contact myself is: canalsidewipresident@gmail.com

April Meeting

Our speaker for this month is the very talented John Parnell, better known as The Hoop Guy. You may have seen him about Castle Street on event days when he can usually be spotted walking up and down on stilts, stopping and chatting to people. John has been "Hooping" professionally since 2008.

He reached the semi-finals of Britain's Got Talent in 2017 and has won many other awards. He will tell us the history of Hula Hooping along with a comedy demonstration.

There will also be an opportunity for audience participation!!! (for those of you who want to give it a try).

Sue x



Upcoming Meeting Reminders

May Meeting: Will start at 7.00pm due to our murder mystery play. Thanx Ann

June Meeting: A quick note about our June meeting which has a 1940's theme, if you would like to dress in 1940s clothes that would really enhance the theme, it's not mandatory just a bit of fun.

There will be a small prize for the winner and of course a photo opportunity for our website. Ann & Sue

Annual Council Meeting 2024



Chrissie Field-Toon and
Henrietta Chubb (High Sheriff).

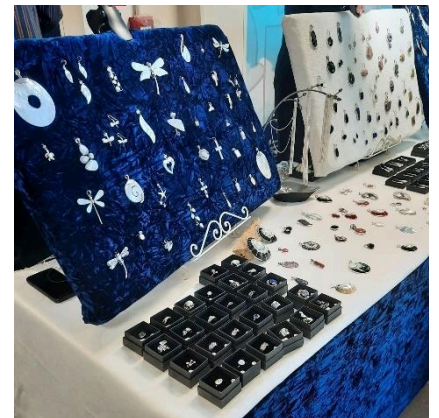
This year's ACM took place on Saturday 16th March at Leicester Grammar School in Great Glen and Canalside was represented by Ann in her capacity as President and our delegate, Chrissie Toon-Field.

Chrissie has produced a comprehensive report on the events of the day, which included the following speakers:

- Rebecca Middleton - 'Canine Partners'
- Henrietta Chubb J.P. - High Sherrif of Leicestershire (A Royal Appointment)
- Polly Toynbee - British Journalist and Writer

The full report will be distributed to Canalside members along with this Newsletter.

A big thank you to Chrissie from all the committee for the time taken to produce.



Leicestershire & Rutland Federation Board of Trustees

The officers of the committee (Ann, Judith, Caroline, Sue, and Margaret) have been asked to a meeting of the Leicestershire & Rutland Federation Board of Trustees to "Have your say" about 3 questions:-

1. What is going well for your WI within the Federation.
2. What we could improve on (The Board).
3. How can the Board help you, moving forward.

The committee would very much appreciate your views on any or all of these questions and if you would like any questions answered. I will be providing sheets for you to complete at our next members meeting. Ann

Resolutions 2024

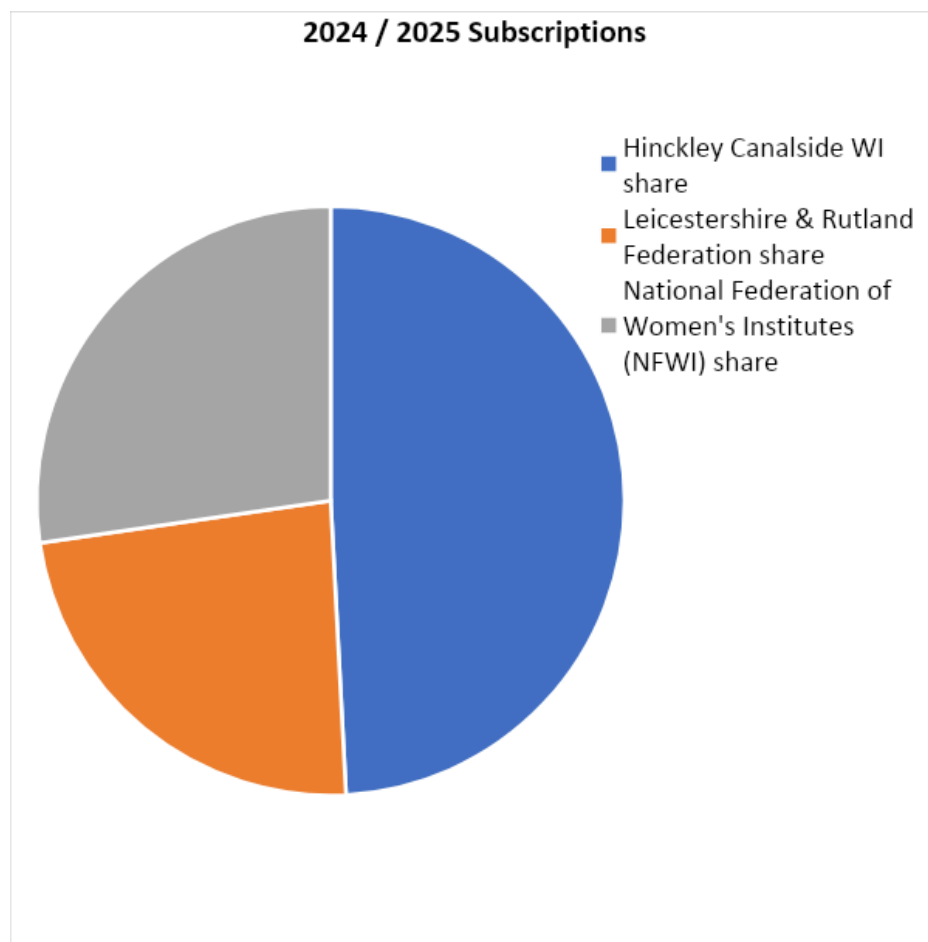
95,000 members across the country voted for which resolution they wanted to support this year. This was an increase on last year. The cause with most votes nationally, and also from Canalside, was **Dental Health Matters**.

It will be finally decided whether we will take this forward at the Annual Meeting at the Royal Albert Hall in June. We will have a chance to give our view before then.

2024 / 2025 Subscriptions

It's that time of year when we renew our annual subscriptions and I thought it would be useful to members to include some information about how your subscription is split between our WI, federation and the NFWI. Your subscriptions help with running our individual group and the organisation as a whole and includes the below for the coming year. Ann.

What does my membership include?



- A welcoming place to make friends and participate in activities
- 8 issues of WI Life magazine
- 11 meetings
- The opportunity to involve yourself in exciting local and national campaigns
- Bespoke member only events held virtually and at venues around the country
- Member's book of discount offers
- Training opportunities such as becoming a WI Adviser or Climate Ambassador
- The option to be a WI committee member, a federation trustee and/or an NFWI trustee
- Access to My WI
- WI Learning Hub

Membership Subscriptions 2024 - 2025

Join or Renew
your membership

The subscription year runs from 1st April to 31st March.

For the year 1st April 2024 – 31st March 2025, the maximum membership fee will be £48.00.

The distribution of the 2024 membership fee is as follows:

Total Subscription **£48.00**: Canalside WI Share £23.60. Federation Share £11.30. NFWI Share £13.10

Dual Membership: The cost of dual membership - payable to the second WI - is a maximum of **£23.60** for the year 1st April 2024 to 31st March 2025.

How to pay: Subscriptions for this year are due on the 1st April and must be paid by the end of April.

We are going to be collecting the subscription monies at the MARCH and APRIL meetings.

Member's Fee for 2024/25 is £48. Dual Member's fee £23.60

Cheques

Make payable to 'Hinckley Canalside WI'. Please print your name clearly on the back of the cheque, as some signatures are unreadable.

or Correct Cash

No change will be given. Please place your cash in a sealed envelope with your name and the full amount clearly printed on the front of the envelope.

Receipts will not be posted but given out at monthly meetings.

Thank you: The committee are grateful for your support which is important and enables us to continue to thrive and offer members a varied programme of speakers, events, and trips throughout the year(s).

Thank you from Ann, Sue, Margaret, Mandy, Caroline, Judith, Jenny, Gill, Caron, Justine, Pat, Lisa, and Cath.

March Meeting Snapshot – Ghosts in Grandeur by Jo Golby



We had a fascinating talk on Wednesday by Jo Golby an ex-tour guide of both Warwickshire Castle and Calke Abbey. Jo talked firstly about Warwick Castle and the history of the castle and what went on behind the scenes by both the living and the not so living! She told us tales of seeing people in full costume walk by and then realising they were actually previous employees of by gone times and not on the pay roll today!

Jo explained how Calke Abbey was built hidden in the hillside as a secret house and then had been extended and added to over the years making it appear topsy turvy. She told us about a hidden staircase she found with colleagues only to discover a bricked-up room where a skeleton of a lady was found.

Jo talked fondly of her time at both venues saying how privileged she felt to work in such beautiful places and surroundings and how magical both Warwick Castle and Calke Abbey were.

Skittles Night, Barnacle Village Hall

We all had a great time at the skittles night at Barnacle Village Hall. We had good fun competing in teams of eight. We had a lovely fish and chip supper and brought our own refreshments. We played a few games of long alley skittles, bar skittles and table top skittles. The winning team and overall top scorer were all given an Easter egg. The team that came last had a bag of skittles each as the booby prize. It was a lovely venue and we all had enjoyable evening.



Craft Sales Table



Thank you to everyone who brought their home-made items to sell at our first Sales Table in March, it was a great success with £15.30p being collected which will be donated to charity.

Please keep an eye out in future newsletters for information regarding our next Sales Table.

Thank you, Margaret Lawrence.

Regular Social Monthly Meet Up

The next Coffee morning meet-up, will be on Thursday 18th April, in the Hansom Cafe, in the Atkins Building, at 11am.

You can park in the car park opposite for £1.20, for 2 hours, card or cash payment.



It would be nice to see a few more members there.

It's lovely to have an informal chit-chat and get to know people outside of the meetings, so please try and come on the 18th.



Hope you will come to join us.

New members/information evening for members 2024



We hold a meeting each year, free to attendees, for members to come along to an evening where we can introduce ourselves and explain how the activities of Hinckley Canalside WI are arranged, and how our WI fits into the larger WI organisation, as part of Leicestershire and Rutland Federation, and as part of the WI nationally.

This year this is planned on the evening of **Wednesday 12th June**, and will be at the **Greyhound Pub** (in the back-room downstairs) at 9 new buildings, Hinckley LE10

1HN, beginning at 7.30pm.

There will be a short information session, an opportunity to ask questions, and time to socialise with other members of our WI and some of our committee. We should be closing the meeting by 9.30pm.

Though this is primarily intended for our newest members, any member is welcome to come along to ask any questions, or just to find out how much more you can be involved with the WI, and what the WI offers all of its members as a national organisation.

So that we can prepare for the evening with an idea of how many of you will be attending, would any members who would like to come please see Lisa at the new member's table in the foyer at meetings, and add their name to the list there please?

If any of you are unable to attend but have a question or suggestion to put to our committee, please do let us have your question, and we will do our best to let you know the outcome.

Fundraising Events

Book Sales Table

There will be a book sales table this month. We have new books now, so please come and have a look. All are 50p each. I would appreciate the correct change, if possible. Thanks Cath.



Trade Directory



Don't forget the trades directory is on the sales table. If you have a tradesman to recommend, then get a business card off them and tell us a bit about the work they've done for you. Thanks Cath.

Raffle

We will be holding a Raffle at our April meeting.

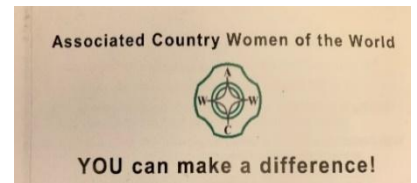
Tickets are £1.00 each.

Any items you have that would make suitable raffle prizes gratefully accepted, please let me have at the meeting. Thanks Gill x



ACWW / Pennies for friendship

WI House have decided to stop the ACWW collection the reason for this is lack of transparency as to where the money is being spent. They have said we can still collect for them, but it is up to us to send it to the appropriate place. Having discussed it at a recent committee meeting, the committee has decided to collect our small change in the purple pots as usual and at the end of the year put it to our members to decide where we should send it. Ann



Jigsaw Table



There will not be a jigsaw table at the April or May meetings.

Cake Makers

A big Thank You to the following who very kindly agreed to bake or buy cakes for our February meeting: **Tara Chattaway, Eleanor Schofield, Jane Moggridge, Karen Saunders, Marylin Houghton, and Jenny Wright.**

We are very grateful to so many of you who volunteer readily and produce such delicious cakes. If you prefer you could bring some fruit instead. In the past this has been appreciated by some members.



Can I please also kindly remind members to bring their own cup / mug for refreshments – thank you.

Thanks Pat.

Clubs and Teams

Canalside WI Walking Group If any members would like to volunteer to arrange a walk in the coming months, please don't hesitate to contact Ann, thank you.

* NEW * Drama Group



More than one member has asked if we could develop a drama group with the intention to produce a production of some kind every year, **Sue Barden-Marshall** has offered to be the coordinator and she will be taking names at our April meeting. Her plan is to maybe meet once a month and then perhaps nearer the time of the production a few more meetings. So if you would like to take part please also suggest a day of the week that would be best for

you.

Third Tuesday Craft Club



At our last session the session was expertly led by Julie Aucott, and we embroidered using the Sashiko technique. We used a template for our design and endeavoured to follow these using stitches of the same dimension (not so easy as it sounds!).

We plan to have a go at braided cards at our next meeting which is at 6.30pm on the third Tuesday of next month. Best Wishes, Julie.



Bits and Bobs Craft Group

The Bits & Bobs crafters met on 26th March. We had a very enjoyable time learning to make a macrame pot holder. It was quite fiddly, but we all made excellent progress.

We will next meet on 30th April, at The Plough, at the usual time of 6.30-8.00pm, when we'll be trying another new skill - to be decided!

Regards, Colleen.

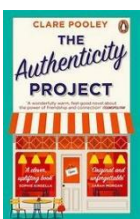


Darts

On the evening of Tuesday 19th March we played our first game against **Great Bowden WI** at The Black Horse in Walcote. We were very evenly matched, and it all went down to the last game which we won. Final result was 4-3 to Canalside. Our next match is against **Narborough and Littlethorpe WI**, to be played in April.



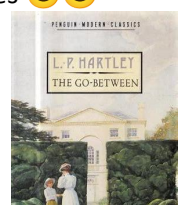
Book Club



Our last meeting was on Monday 11th March and there were 15 of us there to discuss **The Authenticity Project** by **Claire Pooley**. We all enjoyed the book. The characters and relationships were very interesting, and it was a good story, cleverly written. It was also funny in parts and ended happy for most. The only thing about all agreeing and having already decided on future reads was that we had nothing to discuss!! Nevertheless we found plenty of things to talk about amongst ourselves 😊😊

Our next meeting is on **8th April**, and we will be discussing **"The Go Between"** by **L.P.**

Hartley.



A moving exploration of a young boy's innocence who becomes a messenger between Ted, a farmer and Marian, a beautiful young woman at the Hall where Leo is staying. He gets involved in their deceit and desire. It deals with the bounds of Edwardian society. A classic that was on school reading lists when a lot of us were at school.

Other Information

Bottle Tops to Benches

We have been asked by a member of East Leake WI to support the below. They are collecting any hard plastic bottle tops, which are sent to be repurposed and made into benches in the local area. We will be providing a box, and a member will be passing it onto a member at East Leake.

Thank you, Ann x



Race For Life



One of our members Chrissie Field-Toon has asked if any member would like to sponsor her, she is going to do the full Race of Life distance on 14th July at Victoria Park Leicester. Her reason for doing it is that she has lost 8 members of her family to cancer and her mother is receiving palliative care at the moment. She will be at our next meeting and if you would like to donate she will be so pleased to take your name etc.

Thank you.

Information about Canalside WI Events and Trips

Dear Members,

I just wanted to clarify a few aspects of the trips and events that our WI offer.

When do trips open?

We usually open an event/trip three meetings prior to the date of the event/trip (deposit deadline permitting).

At the first meeting the event/trip is open to members only.

At the second and third meetings, the event/trip is open to members, their friends and family.

Why aren't trips organized for weekends?

As you know, we usually arrange a minibus for transport. This minibus is hired from Hinckley and Bosworth Community Transport. They do not offer minibus hire at the weekends.

Why isn't a coach booked rather than a minibus?

Last year, on Saturday 9th September and Saturday 2nd December, we organized day trips to Stratford and London respectively. We booked a 29-seater coach on both occasions. Unfortunately, even though these two trips were offered at a subsidised cost to members, there was insufficient interest and both trips had to be cancelled.

Obviously, our trips must be financially viable to go ahead.

Just one other reminder: if you wish to pay with cash for an event/trip, please bring the correct money.

I hope this information helps. Committee members are always open to suggestions.

Thank you, Mandy.

Please note, this is a draft proposal that will be discussed further in our next committee meeting.

Events and Trips

If you have put your name down for a trip and then find that you can't go, you must inform the committee member responsible.

Please email Mandy and Margaret at canalsidewitrips@gmail.com or phone 01455 251809.

Or the person named in the Events and Trips section below.

Our priority is to find a replacement(s), so you need to give us a **minimum of 48 hours' notice**. If we cannot find an individual/people who want to go then, unfortunately, we are not able to refund you. We do try to have a reserve list for the trips we run.



TWO PLACES STILL AVAILABLE

Visit to Saffron's Flower Farm – Tulip Event.

Thursday 11th April 2024, 10.00am – 12.30pm (approximately).

£25 pp.

A lovely way to celebrate spring after the long winter months!

We are organizing a visit to **Saffron's Flower Farm, (Sutton Lodge), Frolesworth Road, Broughton Astley, Leics.**

LE9 6PG.

17-minutes' car journey from Hinckley and just under 8 miles, so an easy drive.

This is an opportunity to:

- ❖ Do a tour of the flower farm with a talk.
- ❖ Followed by a demonstration of making a tulip arrangement.
- ❖ Then you can make your own tulip arrangement with a generous supply of flowers – and you will take this home with you!

I have heard from other members of other local WI groups, and they have said that it is a very enjoyable and relaxing session. The photos show members of Ullesthorpe WI who attended a similar event last year.

Saffron and Nicole will your hosts. The cost includes coffee/tea and cakes. **The workshop is upstairs, no lift.**

REMEMBER TO BRING YOUR OWN JUG/BOWL/CONTAINER. Chicken wire will be provided.

Please arrive in good time so that the workshop can start at 10.00am.



Joseph and The Amazing Technicolor Dreamcoat, Concordia Theatre, Wednesday 8th May



Reminder – if you have still not paid - full payment for this show needs to be made at our April meeting.

Ticket cost is £15.30 each, this is discounted as we have 20 people going.

Gill x

Visit to the 1620's House & Gardens, Donington Le Heath, Manor Road, Coalville, LE67 2FW. Thursday 16th May.



A house tour and garden tour – each 45 minutes long approximately.

And a visit to the Old Barn Tea Room on site.

Leave Mary Forryan at 1.00pm and return at approximately 5.00pm.

Entry fee: £5 per person, £4.50 seniors.

£5.25 per person for tea/coffee and cake.

So, £10.25 per person or £9.75 for seniors.

Minibus fee: £6.50 per person.

Total charge: £16.75 per person or £16.25 for seniors.

An opportunity to Immerse yourself in an early 17th century experience and take a walk back in time!

From their website:

'This rare and beautiful house is a surviving example of a family home built in the 13th century and then modernised in 1618. The house has been home to many families over its 700-year history, but the Digby family, which included the Gunpowder Plotter Sir Everard Digby, lived in the house for over two hundred years. It is towards the end of the Digby ownership that the newly refurbished house is focused, showing how people lived in late Elizabethan and early Jacobean times.

Visitors can now see the beautifully restored period rooms and talk to our volunteers about the history of the house, the families that lived here and about life in the 1620s. The house is set in beautiful 17th century style gardens with labelled plants and flowers, an orchard, herb gardens and a small maze.'

(N.B. I am told that you can convert your entry fee to a year pass on the day by paying a little extra: £5.95 per person or £5 concession.)

This trip is open to members, their family, and friends at the April meeting.

Broughton Castle near Banbury, Oxfordshire, OX15 5EB.

Monday 24th June.



Entry fee of £12.50 Guided castle tour starting at 2.00pm which lasts about an hour. There is a lovely garden as well.

Travel on minibus £13.50.

TOTAL COST £26.

Journey time from Hinckley 1 hour 15 minutes.

Leave Mary Forryan Centre at 11.55am.

Arrive back at Mary Forryan Centre at 5.45pm.

Broughton Castle is the family home of the 21st Lord and Lady Saye and Sele, whose family name is Fiennes. The ownership of the castle has remained in the same family since 1447. It is a beautiful, moated manor house with gardens, a church, tearoom, and gift shop. The setting is idyllic – with English pastureland all around the castle.

You can bring a picnic lunch and there is also a tearoom onsite selling light lunches and cakes.

Open to members only at the April meeting.

Singin' in the Rain – Kilworth House Theatre, Matinee Performance, Sunday 21st July



Reminder – If you have not yet paid - full payment for this show needs to be paid at our April meeting.

The great news is that we have sold 20 tickets, therefore the cost will be discounted to £44.50 each.

Kilworth never fails to put on a fantastic show !

Gill x

Afternoon Tea at Buttercream Tearoom – Wednesday 7th August



If you would like to join us at Buttercream Tearooms in Hinckley for afternoon tea on 7th August, the cost is £19.00 per person.

Buttercreams have asked for a non-refundable £5.00 deposit to be paid by 7th May; with this in mind we will be collecting deposits at our next meeting in April.

So if you would like to go please see the trips table.

Regards, Ann x

Taste Experience at Leicester College - Friday 22nd November 2024 at 12.30pm.



The restaurant is at Leicester College, Freeman's Park Campus, Aylestone Road, Leicester, LE2 7LW.

We were so impressed with our visit to this restaurant in February that I have provisionally booked a lunch slot for the Christmas menu at 12.30pm on Friday 22nd November.

All the dates in December have already been taken.

The Christmas menu for 2023 cost £21 per person for a three-course meal and included tea and coffee. **There may be a small price rise for 2024.**

It's too early for the Christmas menu to be available, but when we visited in February there were 3 choices available for each course – and they were willing to accommodate special dietary needs.

All 30 places were taken up at the last meeting. I have been able to book 10 more places.

Please can you give me names at the April meeting.

You may decide to use park and ride, Enderby. See the link below:

<https://www.choosehowyoumove.co.uk/park-ride/enderby>

The 203-bus service will take you into the city centre from the park and ride. This bus service runs every 15 minutes. There is a stop outside the LRI opposite the Tigers Rugby Ground. The Taste Restaurant is behind the rugby ground.

Mandy.

This trip is open to members, their family, and friends at the April meeting.

Summary Of Events and Trips

For WI trip bookings and enquiries, please email Mandy and Margaret at canalsidewitrips@gmail.com or phone 01455 251809. Or the person named in the Events and Trips section above.

Trip Details		WI Members		Non-WI Members		Payment Details		
Name	Date	Cost	Open for booking	Cost	Open for booking	Deposit Amount	Balance	Full Amount Due
Saffron's Flower Farm – Tulip Event.	Thursday 11 th April 10.00am – 12.30pm	£25	February meeting	£25	March meeting	N/A	N/A	April meeting
Joseph and the Amazing Technicolor Dreamcoat	Wednesday 8th May	£15.30	January meeting	£15.30	February meeting	N/A	N/A	April meeting
1620's House and Gardens, Donington Le Heath.	Thursday 16 th May	£16.75 pp or £16.25 seniors	March meeting	£16.25 pp or £15.75 seniors	April meeting	N/A	N/A	May meeting
Broughton Castle	Monday 24 th June	£26	April meeting	£26	May meeting	£10	£16	June meeting
Singin' in the Rain Kilworth House Theatre	Sunday 21 st July Matinee	£49	December meeting	£49	January meeting	N/A	N/A	April meeting
Afternoon Tea at Buttercream Tearooms	Wednesday 7 th August	£19.00 pp	April meeting	£19.00 pp	May meeting	£5.00 pp	£14.00 pp	June meeting
Taste Restaurant at Leicester College – Christmas Lunch.	Friday 22 nd November at 12.30pm	To be decided.	Names at the March meeting	-	Names at the April meeting	-	-	-

Trip Notice If your emergency contact phone number has changed, please notify [Pat McShane](#) so that we can update our records. The organiser needs contact numbers in the event of an accident, illness, admission to hospital or a serious event. This is a safeguarding measure for the benefit of all members.

County Events

If you are interested in any of these events, please see me at the County Events table. (More details can be found in the flyers I have sent out.) All the information about County Events is in your newsletter and County News.

You can book with me at a meeting or contact federation yourself by email at: wihouse@lrfwi.org

You will need a booking form first at: leicestershire-and-rutland.thewi.org.uk/federationdownloads.

Payment to the Federation is by BACS. Please send BACs payments to: L&RFWI, NatWest Bank, Sort code: 60-02-17, Account number: 24626546 Reference: Event Name.

Kind Regards, **Judith Smith**

Leicester Treasure Hunt . Around the city of Leicester, teams of up to 4. **Sunday 12th May 10-10.30am**. Cost £5, Lunch arranged but not included in the price. **Wednesday 15th May 10-10.30am** , £7 includes coffee/tea and cake.

Spring Lunch Saturday 11th May, cost £32 for 2 course lunch. Guest speaker Lesley Smith as Katherine Swynford - mistress of John of Gaunt. Devonshire Place Leicester LE2 0RA

Faith Visit BAPS Shriminarayan Mandir, Leicester. Tuesday 21st May , 10 - 12 pm. £8 to include refreshments. An opportunity to learn about Hindu values and visit their amazing temple.

Barracca Garden visit. Monday 10th June, 7pm or Monday 17th June 2pm. Ivydene Close, Earl Shilton. £10 to include tea/cake. An opportunity to visit a 1-acre garden with lots of garden shrubs and plants.

BBC Gardeners World Live, Saturday 15th June, cost £44. Coaches leave from WI House at 9.00 am and Burbage Three Potts Bus Stop at 9.30am. Return from NEC at 4,30pm. Please note this is going to be very popular so please book early.

Lino Cut Workshop, Saturday 15th June, WI House. Cost £30 to include all materials. Please bring a packed lunch. Tea / coffee will be provided. 10.00am - 3.00pm.

Stump Work, Saturday 29th June and Saturday 6th July, 10.00am - 3.00pm. WI House Cost £40 for both days. Please bring a packed lunch. Tea / coffee will be provided throughout the day. You will need to bring your own glasses sewing essentials, including a 5-inch hoop if you have one.

Summer Afternoon Tea, Thursday 11th July, Laburnum Hall, Humberstone, 1.30pm 2024, tickets £12 to include afternoon tea. Guest Speaker Mitchell Bridgewater who was a contestant on The Great British Sewing Bee. Family and friends welcome.

Croquet Taster Session, Wednesday 24th July . Leicester Croquet Club, Humberstone. 2.30 pm or 7.00 pm. £12, flat soled shoes to be worn.

Autumn Dabble Day, Saturday 23rd November. South Croxton Village Hall. £20 to include all materials. 10.00am - 3.00pm. Chance to try a variety of crafts. A basic sewing kit and glasses for close/fine work may be needed. Tea/coffee will be provided.

Harrogate Holiday, Monday 13th January to Friday 17th January, 2025. Travel by coach. Cost £339 (£20 single supplement) Chance to visit many of the town's historic buildings. Includes four nights accommodation, four evening meals, four buffet breakfasts and one afternoon cream tea and nightly entertainment.