

theWI

INSPIRING WOMEN



HINCKLEY CANALSIDE WI

SEPTEMBER 2023

<https://hinckleycanalsidewi.co.uk/>

President's Message

Dear Members, I hope you have had a good summer so far – despite the indifferent weather! In July some of our members enjoyed the excellent production of 'Hairspray' at Kilworth House Theatre and, in August, others travelled to the Cotswolds to visit Sezincote. Thanks to both Gill Hannah and Judith Smith.

At our July meeting we enjoyed a speaker with a difference - Isobel Glover-Evans sharing her experiences from her time spent studying, working, and living in Japan.



September Meeting, Wednesday 6th.

At our next meeting, on Wednesday 6th September, career, image and life coach, Philippa Guy, will offer us an update on this autumn's colours and trends.

At our September meeting Pat McShane will also be asking members to complete a brief questionnaire so that the committee has some feedback on how you feel about the programme and additional activities on offer – as well as any ideas for future initiatives.



Canalside WI Website



Just a reminder that **all** our newsletters can be found on our website, which is easily accessible – no username or password needed!

Simply, type into your internet browser, **Hinckley Canalside WI**. Here is the link if you want to click onto it:

<https://hinckleycanalsidewi.co.uk/>

You will see the home page and on the green bar the link for Newsletters – just click on it.

To move to the next page of a newsletter, place your cursor at the bottom and then click on the arrow.

Can you help?

As always, at the start and end of meetings we do require help in putting out and clearing away tables and chairs. So, if you are able, we would very much appreciate your arriving at 7:00 pm and lending a hand. Looking forward to seeing many of you at the next meeting.

Just a reminder - the email address to contact either myself or Ann Bowles is: canalsidewipresident@gmail.com

Direct mailing from Leicestershire & Rutland Federation of WIs

The Federation is about to test sending out information direct to all our members who have an email address stored within their MCS (Membership Communication System) record. This is the record Pat McShane keeps and updates on all Canalside members.

This exercise is going to happen soon (probably late September/October). It will only be Leicestershire/Rutland Federation information you will receive and anyone receiving it who doesn't wish to receive further information in this direct way will be able to opt out.

I will update you if/when I hear more about this. Mandy.

Regular social monthly meet up?

A Canalside WI member has suggested a regular monthly meetup in a local café for anyone who is free and would like some company. If you are interested in this, Cath Greenwell – at the sales table - will be taking names at the September meeting.

A volunteer to coordinate this activity and act as a contact point would also be welcome. It may be possible to set up a WhatsApp group for this. Mandy.

Westfield Community Centre Lunches - Thursday Lunch Club



A Canalside WI member has kindly told me about the following community service, and I wondered if some of you might be interested.

The cost is £5.00 for a hot dinner and pudding. As well as a hot lunch, there are jacket potatoes with cheese/beans/salad, but staff would need to know if someone is vegan/vegetarian or has special requirements.

For an extra £1 **each way** there is transport available. A bus and a taxi go out to pick up people from the Hinckley and

Burbage area and transport them to and from the centre. People arrive at the centre at about 10.30am.

This is a time to socialise prior to lunch, with tea/coffee and biscuits/cake.

You can make your own way to the centre, but it would be useful if you can phone in first to order lunch.

Here are the contact details for the Westfield Community Centre, Rosemary Way, Hinckley, LE10 0LN.

Phone: 01455 637516 Email: westfieldcc_uk@yahoo.co.uk

Fund-Raising Events

Fashion Show



We will be taking names and money for the Fashion Show at the meeting. This is to be held on Wednesday 25th October at the Mary Forryan Centre. Price £6 to include light refreshments. This event is open to family and friends. It is the same company we had last time. SOS Charity Fashion Shows. You will have the opportunity to buy many high-street brands at greatly reduced prices. Sizes range from 6 - 30.

We could do with a couple more models. If you have ever fancied a turn on the 'catwalk' let one of us know. Sue

Market Stall



On the morning of 5th August, we woke up to rain, but being optimistic that it might brighten up, set off for Castle Street to set up the stall.

However, the rain continued to come down, the footfall in Castle Street was very slow and those people that did venture out just wanted to do what they needed to do. By 12:30 hrs we were thoroughly drenched and cold so decided that **'RAIN STOPPED PLAY'**. We did manage to sell quite a lot of items and raised **£97.50** which will be divided between Hinckley Foodbank and Hinckley Canalside WI.

Thank you to all those who came to help on the day, you were absolute troopers. Also, many thanks to those of you who donated items. The non-perishable items that remained we will save for the next time we have the stall. There were a few large cakes left that have been frozen and will be defrosted and brought to our September meeting for you to enjoy with your tea/coffee. Sue x

Monies raised from these events will go to Canalside Charitable Funds and Hinckley and District Food Bank.

Raffle



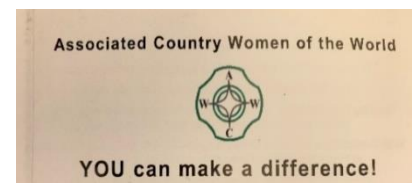
We will be holding a raffle at our September meeting. Tickets will be £1 each.

If you have any suitable raffle items, please bring them along to our next meeting.

Thanks Gill x

ACWW / Pennies for friendship

Please remember to bring any loose change you may have and throw it in the big purple bucket or the smaller containers around the room. Thanks for your continuing generosity. Pat x



Cake Makers



A big Thank You to those of you who volunteer to make or buy cakes for our meetings. We have some cakes that weren't sold on the market stall that were frozen and we will bring to the September meeting. Some committee members - Jenny, Caroline and Maureen - will also bake to make sure that we all have enough. 😊

At our meeting I shall be looking for volunteers to bake at our October meeting!
Thanks in advance. Pat.

Sales Table



There will be a book sales table at the next meeting.
Hope you've read all your books and you're ready to buy some more!!
Please try and bring the correct change. Everything is 50p.

I know some of you have found the **TRADES DIRECTORY** useful. Come and look at it, if you need a trades person to do some work for you. Also don't forget, if you have any work done for you, to get a business card from the person who did the job and write a bit about it and don't forget to put your name on it.

Thank you. Cath Greenwell.

Jigsaw Table



There will be a jigsaw table at the September meeting.
It's free to swap a puzzle, £2 to buy one.

July Meeting Snapshot-Japanese Culture and Language



Isobel Glover-Evans explained that Japanese culture combines old traditions with the very new in technology. One of the most obvious social conventions is the bow: everyone bows when you say hello, goodbye, thank you or sorry. There is no tipping in Japanese restaurants and other places we might expect to tip: staff will always give the very best service they can. Isobel recalled an uncomfortable moment on discovering that - whilst being naked in a public place might feel a little strange to those from Western countries - bathing nude in communal baths is a normal activity in Japanese culture.

Traditionally, Japanese men were the breadwinners, but this is changing. Isobel spoke very highly of her host family who taught her so much – including being able to leave personal possessions in public places without fear of them being stolen. As a Western woman, Isobel felt that she may have been treated a little differently and with more caution.

Isobel introduced us to the basics of the language and told us that she found it an easier language to learn than French because, for example, there are no distinctions between genders or between singular and plural. There are three writing systems called hiragana, katakana and kanji and Isobel showed us the hiragana letters. We had fun as she taught us how to pronounce some everyday greetings.

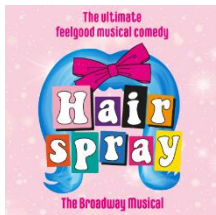
On that note, I will say *Ohayou gozaimasu.* (Goodbye)!

Events and Trips

If you have put your name down for a trip and then find that you can't go, it is your responsibility to inform the committee member responsible. At present this is **Mandy Cutler 01455 251809.**

Our priority is to find a replacement(s) so you need to give us a **minimum of 48 hours' notice**. If we cannot find an individual/people who want to go then, unfortunately, we are not able to refund you. We do try to have a reserve list for the trips we run.

Kilworth House Theatre-Hairspray



20 ladies went to see the matinee performance of Hairspray at Kilworth house Theatre in July. Despite a very wet start to the day, the sun came out and made for a very pleasant afternoon. We were treated to an excellent and thoroughly enjoyable show. If you have never been to the open-air theatre, I would highly recommend it.

Looking forward to the announcement of next year's show.

Gill x

Sezincote House and Gardens, 3rd August



We all had a great day with the sun bright and no rain. The house and grounds were a wonderful mix of Indian/oriental and English architecture and furniture.

We had a very knowledgeable guide, and, after the tour, most managed a cup of tea and a piece of cake in the Orangery Café, as well as a walk around the gardens.

Judith.

Stratford upon Avon Day Trip – now Friday 8th September



I have already emailed all members, but here is the update for those without email addresses.

We had 9 members sign up, but we had booked a 29-seater coach. So, unfortunately, I have had to cancel the coach.

An alternative is to travel by minibus, but as there is no driver available on the Saturday, the trip would need to take place on **Friday 8th September**. **The minibus carries 16 passengers.**

So, to sum up:

WHEN: Friday 8th September.

PICK UP POINTS/TIMES:

9.00am Hinckley Bus Station and 9.10am St Catherine's Church Burbage.

Leave Stratford at 4.00pm, arriving back at approximately 5.00pm.

COST: It is a subsidised trip for members. So, £6 for members and £12 for non-members.

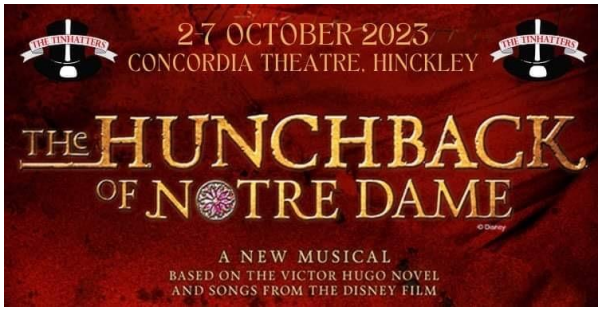
If you, your friends, or family would like a place, can you please email me or phone me on 01455 251809. You can pay at the September 6th meeting.

Our next WI meeting is on Wednesday 6th September, and I shall make an announcement confirming that this trip is taking place or not.

FOR THOSE WHO HAD BOOKED A PLACE ON THE COACH: If you cannot go, that is fine, and you will get a refund. Similarly, if you still want to go, you will be entitled to a refund due to the lower cost. **PLEASE CONTACT ME TO LET ME KNOW WHETHER YOU STILL WANT YOUR PLACE OR NOT.**

Thank you, Mandy.

Hinckley Concordia Theatre – Thursday 5th October

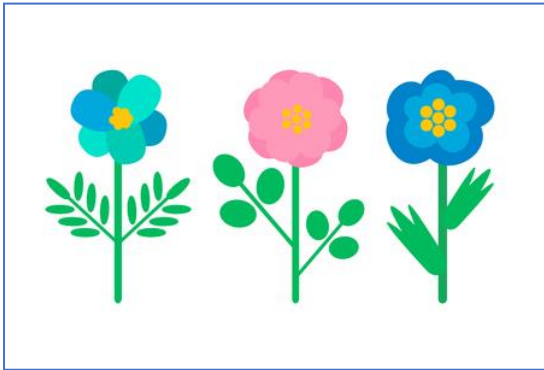


If you have not fully paid for Hunchback, I will need the remainder of your money at our September meeting.

This is £9.40 per person.

On the night of the performance, I will meet you in the usual place, upstairs near the piano, to hand out tickets. Gill

A Floral Workshop at Elmesthorpe Village Hall, Wilkinsons Lane, Elmesthorpe, LE9 7SP



Saturday, 7th October 2023, 10.00am - 1pm.

This event is for budding flower arrangers and gives an opportunity to learn new skills and get to know NAFAS. All materials, including British grown flowers and container, are included in this funded event.

It will be hosted by Earl Shilton Flower Club, but the workshop will be headed up by a National Association of Flower Arranging Societies (NAFAS) teacher and demonstrator Helen Chambers.

COST £10 (to be paid on making a booking). Tea, coffee & cakes available.

For more information and to reserve your place please contact Roz on 07791 13318

Beetle Drive – Wednesday 11th October

We still have tickets available for the Beetle drive. We hold this every year in memory of one of our committee members at the Greyhound Pub on New Buildings on Wednesday 11th October; the cost is £7.00 which includes a light supper.

I will be available at the next meeting to sell tickets.

Ann Bowles



Elf the Musical-Hinckley Concordia Theatre – Wednesday 8th November



Anyone who put their names down at our last meeting for this theatre trip, I will need full payment at our September meeting.

The good news is we have enough ladies going to qualify for 10% discount.

Cost is therefore £14.40p each.

Gill x

Bond Street Distillery Tour and Afternoon Tea – Thursday 9th November



We are going to the Bond Street Gin Distillery for a tour and afternoon tea.

As we have more than 20 people going this will be £25 per person.

There are still a few members who need to pay **the balance of £15. This must be paid at the September meeting.**

Day trip to London, Saturday 2nd December



Covent Garden at Christmas

We have booked a 29-seater coach. **This is a subsidised trip for members.**

The cost of travel for **members is £18.50** and for **non-members £24.50**.

The trip will be open to members only at the September meeting. The trip will be open to members, their friends and family at the October and November meetings.

There will be two pick- up points: 7.30am Hinckley Bus Station and 7.40am St Catherine's Church, Burbage.

We plan to leave London at 4.30pm.

The coach driver will drop us off at a convenient place near Trafalgar Square, where there are underground stations. (We will be collected from the same place at the end of the day.)

A great opportunity to enjoy a pre-Christmas visit to London and please yourselves how you spend the day – sightseeing, shopping or visiting attractions.

Here is the link to the official Visitor Guide to London (just click): <https://www.visitlondon.com/>

This website also has an events calendar, showing events for every month, including **Christmas in London**

Enjoy! Mandy.

Clubs and Teams

Future of the Canalside WI Walking Group



As you know, there was a request for interested members to volunteer to organize one walk each in the July newsletter and at the July meeting. In this way, I could have compiled a rota.

Teresa Leavitt has kindly offered to organize and lead the walks for October and November 2023, possibly Burbage Common for the October walk.

I am happy to lead the September walk – details below.

Unfortunately, no other offers to organize walks were made.

Bosworth Battlefield Walk



The morning of **Wednesday 20th September.**

Meet at the Heritage Centre car park, CV13 0AD (£2.50 per day) at 10.45am to start walking at 11.00am.

A circular walk from Bosworth Battlefield Heritage Centre, taking in Ashby Canal tow path, Sutton Cheney Wharf and Ambion Woods.

We can enjoy a cup of tea at either the Sutton Cheney Café or the Tithe Barn Café.

Please sign up at the September meeting.

Third Tuesday Craft Club

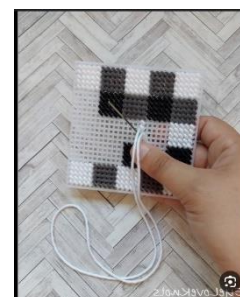


Hi All, At our July meeting we decided to make different projects that were destined to be items for the forthcoming WI stall.

We made cards and decorative hanging teddy bears and birds. Joy very kindly brought cakes which were delicious. Angela organised the session for those who wanted to make the decorative hangers. Pat organised the session for those

who wanted to make cards. The structure of the session was slightly different to the usual way we work but very enjoyable none the less.

At our August meeting we started to make tapestry coasters. Unfortunately owing to joy's wonderful baking which we all enjoyed immensely (and the over-riding desire to chat) we didn't get the chance to complete our projects during the session as we ran out of time, so we decided to finish them at home.



At our next meeting the group decided to revisit making embroidered bookmarks as many missed this session last time. We welcome new members and meet on the third Tuesday of the month. If you require any information, please see Julie Murray or Julie Cooper.

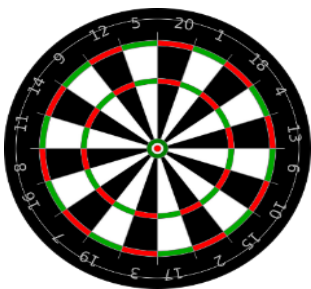
Bits and Bobs Craft Group



The Bits and Bobs craft group met up on 25th July and 29th Aug to learn how to do Sashiko embroidery. We all found it very interesting and fairly easy to do. It's basically using a stitch similar to a running stitch using white thread on a dark background. We'd been given both of those, so it was an excellent opportunity to try it out. Vivienne had done it before, so gave us lots of advice and brought very helpful stencils. Some of us adorned items of clothing, which looked amazing!



Darts



We enjoyed our darts season and finally we had a win in our last match against Great Bowden WI on Tuesday 25th July at The Black Horse, Walcote. Well done to those 4 ladies in the photo: Joy, Tina, Mary and Pat 😊

We are hoping to meet up to practice before the next season so if there's anyone who would like to join us please let us know.
Pat x



Skittles



Its time for Skittles again – our first match being against Broughton Astley WI on Wednesday 13 September.

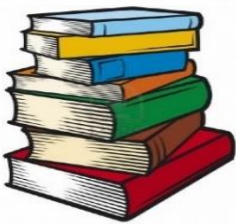
This is being played at the Red Admiral in Broughton Astley.

It's always a great night!

Anyone wishing to join us, either to play, or watch and join in the evening, please let me know.

Gill x

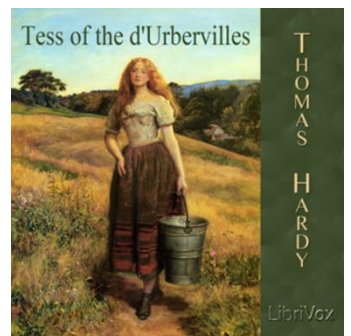
Book Club



Both of the books we read and discussed since our last meeting were set in World War 2. We enjoyed them both but would highly recommend the August one.

In July we read **'The Lost Song of Paris'** by Sarah Steele and in August read **'The Rose Code'** by Kate Quinn.

It was decided that we should give a "Classic" another visit and our book for September is **'Tess of the D'Urbervilles'** by Thomas Hardy.



All welcome.....we meet at The Greyhound on the 2nd Monday of each month at 11.45.

Pat x

Summary of Events and Trips

For WI trip bookings, please contact Jenny Wright on 07790 923423 or the person named in Events and Trips section above.

Trip Details		WI Members		Non-WI Members		Payment Details		
Name	Date	Cost	Open for booking	Cost	Open for booking	Deposit Amount	Balance	Full Amount Due
Stratford-on-Avon*	Friday 8 th September					£6.00 or £12.00 non-members	-	September meeting
Hunchback of Notre Dame	Thursday 5 th October	£14.40	FULLY BOOKED	£14.40	FULLY BOOKED	£5.00	£9.40	September meeting
Beetle Drive	Wednesday 11 th October	£7.50	July meeting	£7.50	July meeting	Full Payment	N/A	September meeting
Fashion Show	Wednesday 25 th October	£6.00	July meeting	£6.00	July meeting	Full Payment	£6.00	September meeting
Bond Street Distillery	Thursday 9 th November	£25.00	FULLY BOOKED	£25.00	FULLY BOOKED	FULL	FULL	September meeting
London Christmas Trip*	Saturday 2 nd December	£18.50	Sept meeting	£18.50 or £24.50 non-members	October meeting	FULL	FULL	November meeting

* This is a subsidised trip for Hinckley Canalside WI Members and is therefore open to members for one month before being opened to non-members.

Trip Notice If your emergency contact phone number has changed, please notify [Pat McShane](#) so that we can update our records. The organizer needs contact numbers in the event of an accident, illness, admission to hospital or a serious event. This is a safeguarding measure for the benefit of all members.

County Events

If you are interested in any of these events, please see me at the County Events table. (More details can be found in the flyers I have sent out.)
Judith Smith

Beading Workshop. , 9th September 10 - 3.00pm (cancelled from February), WI House £25.

Developing Embroidery Skills Workshop. Saturday 7th October 2023. 10am-3pm, WI House £25.
Learn embroidery stitches to make a hanging sampler. Beginners or improvers welcome.



Autumn Lunch, 14th October, 12.30 , Devonshire Place Leicester. £30 for two course meal. Speaker Kath Ryan of cakes4casualties.

Science Question Time by Dr Maya Burns. The topic will be "Citizen Science and Nature Connectivity." @ WI House on **Wednesday 1st November, 7.30 - 9.30pm.** £8 per person. There will be a chance for questions after the talk.

Billa Barra Hill, 25th Anniversary Walk and lunch 7th November 10.30 am in the car park (LE67 9TA) £6. Revisit the copse where LRFWI planted 258 trees, followed by lunch provided by Markfield WI

Seasonal Serendipity 16th November Main Street Leicester. £12 to include afternoon tea and speakers Sue Lobb and Gail Woolescroft

GROBY WI Coach trip to Thursford Christmas Show, Friday 24 November 2023. A Roberts coach trip, leaving Groby village centre at 8.30 a.m. Arrives at Thursford approx. 12 noon. Show starts 2 p.m. Leaves Thursford at 5.15 p.m., arriving back at Groby approx. 9 p.m. (There is a WC on the coach)

Ticket price includes entrance to the show and depends on the coach size: the more people the cheaper! Smaller coach £92 per person. Larger coach £84 per person. **Tickets** from Julie Kotecha with immediate £5 deposit payable.

Please contact Julie at: cosmic784@hotmail.com or at 0116 287 2355.

Christmas Dabble Day Saturday 25th November 2023. 10am-3pm. Park House, Stamford St, Glenfield LE3 8DL. £20. Learn how to make traditional craft items ready for Christmas gifting.

A Christmas Cracker of a Walk, a seasonal informative walk around Leicester, 5th & 7th December. £7 each, this includes a mince pie and a cup of tea/coffee.

Eastbourne Holiday 15 - 19th January 2024. £299 pp (£20 single supplement) A chance to explore this lovely coastline. Evening meals and buffet breakfast included plus two, day excursions.